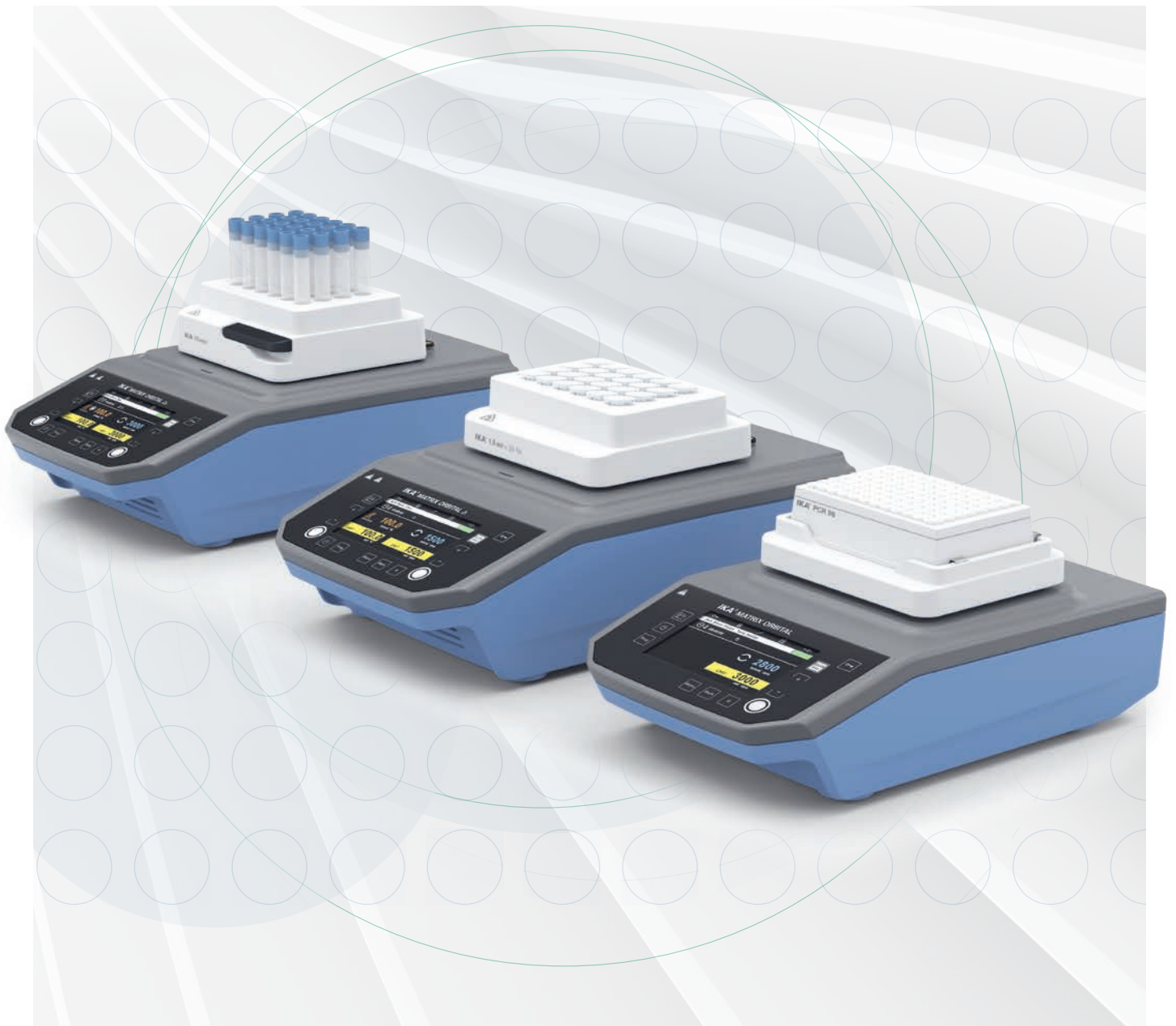


IKA

designed for scientists

EN



MIXING, HEATING, COOLING |
MATRIX THERMOSHAKERS

MATRIX

/// THERMOSHAKERS



Mixing, heating, cooling, or all at once? MATRIX is a powerful thermoshaker family and your ideal companion for sample preparation in laboratories for molecular biology, pharmaceuticals or biochemistry. Regardless whether blood samples, pharmaceutical agents, DNA/RNA samples or ELISA assays – samples with even the smallest volumes are mixed reliably and completely in all laboratory applications.



Intuitive use

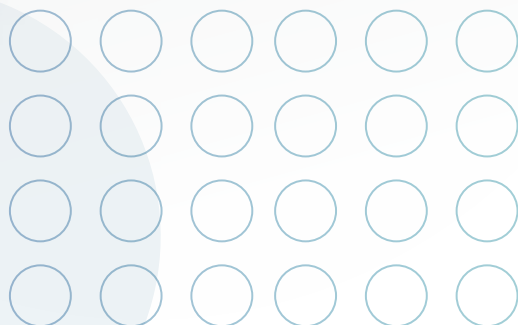
The large clear display allows an absolutely intuitive navigation with a user-friendly and self-explanatory menu structure.

High speed

Speeds of up to 3000 rpm ensure that the liquid is mixed particularly quick and effective thanks to its orbital movement.

Extra stable housing

Excellent stability and everyday robustness is achieved by the aluminum die cast housing. This ensures a secure positioning and strengthens the whole device.



DIFFERENT MODELS

The models of the MATRIX thermoshaker family have different features, to provide you with a device fulfilling precisely the functions you need for your experiments.

Mixing



MATRIX ORBITAL

/// Suitable for three different inserts.

Ident. No.: 0030000627

Mixing & heating



MATRIX ORBITAL DELTA

/// Available with different fixed attachments.

Model: FP | F0.5 | F1.5 | F2.0

Ident. No.: 0030000751 | 0030000747 |
0030000750 | 0030000753

Heating & cooling



MATRIX DELTA PLUS

/// Available with variable attachments.

Ident. No.: 0030000717

Mixing, heating & cooling



MATRIX ORBITAL DELTA PLUS

/// Available with variable attachments.

Ident. No.: 0030000731

VARIETY OF ATTACHMENTS

A wide range of interchangeable attachments enables the thermoshakers to be flexibly adapted to different requirements and applications. Sample vessels with different volumes as well as microtiter plates and deep well plates can be mixed and tempered. A stable quick-release fastener makes it easier to exchange the attachments, and at the same time ensures they are optimally fixed for effective temperature transfer.

User safety is guaranteed, as high temperatures are not transferred to the frame. Also, the MATRIX unit automatically recognizes which attachment the user has chosen.



ATTACHMENTS

MX 0.5 ml / Ident. No.: 0030000840

MX 1.5 ml / Ident. No.: 0030000829

MX 2.0 ml / Ident. No.: 0030000834

Enzyme reactions

The model MATRIX Delta Plus allows incubation of the reaction mix at the enzyme specific temperature, without shaking.

The attachments are adapted to the shape of the tubes to ensure uniform conditions throughout the entire vessel.



MATRIX DELTA PLUS

Ident. No.: 0030000717

MATRIX ORBITAL DELTA PLUS

Ident. No.: 0030000731



High-throughput PCR

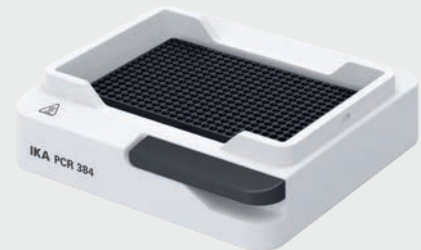
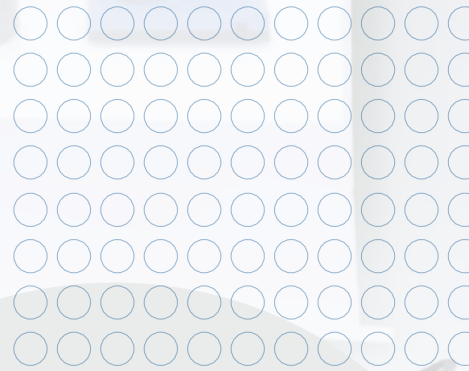
High-throughput samples can be incubated with the attachments for 96 and 384 well PCR plates and tubes.

With the models MATRIX Delta Plus and MATRIX Orbital Delta Plus the plates can be heated, cooled and mixed as desired.

ATTACHMENTS

MX PCR96 / Ident. No.: 0030000853

MX PCR384 / Ident. No.: 0030000857





Cell culture

Media, components or cell cultures can be tempered and mixed with the 5 ml, 15 ml, 50 ml and the 12 mm attachments for the models MATRIX Delta Plus and MATRIX Orbital Delta Plus.



D



E



F



G



H

MX carrier / Ident. No.: 0030000849



For gentle thawing of frozen cells the attachment for 1.5 ml and 2 ml cryo vials is ideal. To ensure cell viability the slow tempering mode can be activated, which increases the temperature slowly and carefully.

The MX carrier attachment for cell culture plates allows tempering and mixing of various plates. The two inbuilt tempering modes adjust the heating or cooling as needed.

ATTACHMENTS

- D MX 12.0 mm / Ident. No.: 0030000844
- E MX cryo / Ident. No.: 0030000848
- F MX 5.0 ml / Ident. No.: 0030000859
- G MX 15.0 ml / Ident. No.: 0030000821
- H MX 50.0 ml / Ident. No.: 0030000863



MATRIX ORBITAL DELTA PLUS
Ident. No.: 0030000731

AUTOMATED TEMPERATURE SHIFT

Through programmable temperature ramps the model MATRIX Orbital Delta Plus can perform mixing, cooling and heating steps automatically. A series of 5 steps can be programmed to perform an experiment independently and reliably.

Restriction digestion

The digestion of DNA samples is performed automatically with no further supervision needed. The programs are set following the reaction protocol. In step 1 ideal reaction conditions for the enzyme are established to digest the DNA. The reaction is then stopped with step 2 by heating up and therefore denaturing the enzyme. To prevent DNA degradation the sample is cooled in step 3 until the sample is processed further.

PROGRAMMED STEPS:

- Step 1: 37 °C for 1 h
- Step 2: 65 °C for 10 min
- Step 3: 4 °C



ATTACHMENT

MX 1.5 ml / Ident. No.: 0030000829



MATRIX ORBITAL DELTA PLUS

Ident. No.: 0030000731

Incubation of Elisa plates

With MATRIX Orbital Delta FP the ELISA plates can be mixed at room temperature or heated during incubation.

If also cooling of the plates while mixing is required, the MX carrier attachment and model MATRIX Orbital Delta Plus can be used.



MATRIX ORBITAL DELTA FP
Ident. No.: 0030000751



ATTACHMENTS

MX insert PCR96 / Ident. No.: 0030001159

MX insert 0.5 ml / Ident. No.: 0030001157

MX insert 1.5/2.0 ml / Ident. No.: 0030001158

MATRIX ORBITAL

Ident. No.: 0030000627

Mixing samples at room temperature

MATRIX Orbital can mix samples in various tubes or microplates with a speed range from 300 – 3000 rpm.

The shaking diameter of 3.0 mm generates effective mixing of the samples even in the microliter range.

With the "Quick mix"-button the samples are mixed fast for as long as the button is pressed (touch function).





LIGHT PROTECTION

The cover can be used to shield light sensitive samples.

MX cover / Ident. No.: 0030001253



THERMOCOVER

The heatable ThermoCover prevents condensation on the vial lid and wall. At the same time it enables constant reaction conditions.

MX thermocover / Ident. No.: 0030001244

Why should the formation of condensate be avoided?

When the samples are heated, liquid evaporates from the tubes or wells and accumulates on the vessel lid. This shifts the concentrations in the reaction mix. For example, the decreased amount of substrate leads to a reduced enzyme activity.




TECHNICAL DATA

MODEL	MATRIX ORBITAL	MATRIX ORBITAL DELTA FP F0.5 F1.5 F2.0	MATRIX DELTA PLUS	MATRIX ORBITAL DELTA PLUS
Mixing	Yes	Yes	–	Yes
Heating	–	Yes	Yes	Yes
Cooling	–	–	Yes	Yes
Type of movement	Orbital	Orbital	–	Orbital
Attachments	Variable inserts	Fixed attachment for plates 0.5 1.5 2.0 ml	Variable attachments	Variable attachments
Shaker diameter	3 mm	3 mm	–	3 mm
Permissible shaking weight (excl. attachment)	–	0.3 kg	0.3 kg	0.3 kg
Speed min (adjustable)	300 rpm	300 rpm	–	300 rpm
Speed max.	3000 rpm	FP F0.5: 300 - 2000 rpm F1.5 F2.0: 300 - 1500 rpm	–	3000 rpm (depending on attachment)
Heating temperature min.	–	Room temp. +4 °C	Room temp. -30 °C	Room temp. -15 °C
Heating temperature max.	–	100 °C	110 °C	100 °C



ACCESSORIES

SHAPES OF THE HOLE

ATTACHMENTS	Diameter	Depth	Bottom Shape	Ident No.
(A) MX 0.5 ml	8.1 mm	28.0 mm	Conical 	0030000840
(B) MX 1.5 ml	11.1 mm	36.5 mm	Conical 	0030000829
(C) MX 2.0 ml	11.1 mm	36.7 mm	Conical 	0030000834
(D) MX 12.0 mm	12.5 mm	33.5 mm	Flat 	0030000844
(E) MX cryo	12.5 mm	33.5 mm	Flat 	0030000848
(F) MX 5.0 ml	17.0 mm	54.5 mm	Conical 	0030000859
(G) MX 15.0 ml	17.0 mm	105 mm	Conical 	0030000821
(H) MX 50.0 ml	30.0 mm	97.0 mm	Conical 	0030000863
(I) MX PCR96	6.44 mm	14.0 mm	Conical 	0030000853
(J) MX PCR384	4.0 mm	8.0 mm	Conical 	0030000857

CARRIER AND INSERTS	Usage	Ident No.
(K) MX carrier	Suitable for microtiter and deep-well plates	0030000849
(1) MX insert PCR96	For PCR tubes	0030001159
(2) MX insert 1.5/2.0 ml	For 1.5 ml & 2.0 ml tubes	0030001158
(3) MX insert 0.5 ml	For 0.5 ml reaction tubes	0030001157

COVER AND THERMOCOVER	Usage	Ident No.
(L) MX cover	For attachments PCR 96, 384; 0.5, 1.5, 2.0 ml	0030001253
(M) MX thermocover	For attachments PCR 96, 384; 0.5, 1.5, 2.0 ml	0030001244





designed for scientists

EN

IKA-Werke GmbH & Co. KG

Janke & Kunkel-Straße 10, 79219 Staufen, Germany
Phone: +49 7633 831-0, eMail: sales@ika.de

/// WORLDWIDE

USA

IKA Works, Inc.
Phone: +1 910 452-7059
eMail: sales@ika.net

KOREA

IKA Korea Ltd.
Phone: +82 2 2136 6800
eMail: info@ika.kr

BRAZIL

IKA Brazil
Phone: +55 19 3772-9600
eMail: sales@ika.net.br

MALAYSIA

IKA Works (Asia) Sdn Bhd
Phone: +60 3 6099-5666
eMail: sales.lab@ika.my

CHINA

IKA Works Guangzhou
Phone: +86 20 8222 6771
eMail: info@ika.cn

POLAND

IKA Poland Sp. z o.o.
Phone: +48 22 201 99 79
eMail: sales.poland@ika.com

JAPAN

IKA Japan K.K.
Phone: +81 6 6730 6781
eMail: info_japan@ika.ne.jp

INDIA

IKA India Private Limited
Phone: +91 80 26253 900
eMail: info@ika.in

UNITED KINGDOM

IKA England LTD.
Phone: +44 1865 986 162
eMail: sales.england@ika.com

VIETNAM

IKA Vietnam Company Limited
Phone: +84 28 38202142
eMail: sales.lab-vietnam@ika.com

THAILAND

IKA Works (Thailand) Co. Ltd.
Phone: +66 86 375 7451
eMail: sales.lab-thailand@ika.com

TURKEY

IKA Turkey
Phone: +90 216 394 43 43
eMail: sales.turkey@ika.com

Subject to technical changes.
Information regarding delivery is not binding.



www.ika.com



IKAworlwide // #lookattheblue